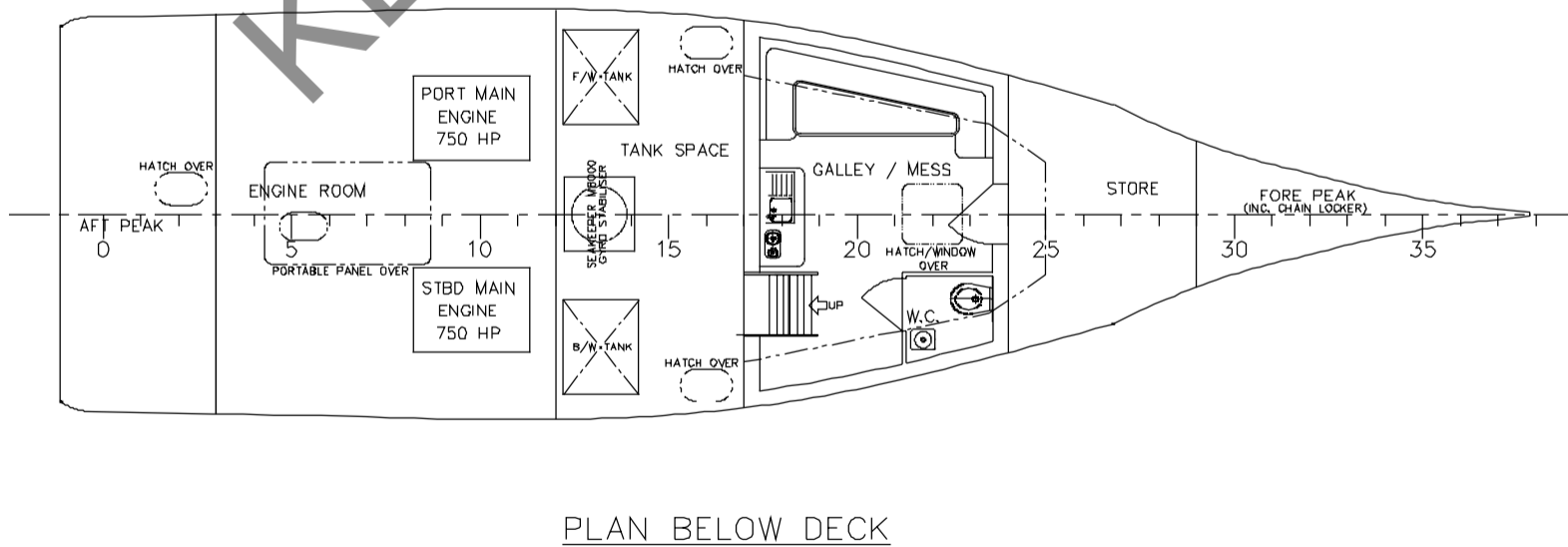
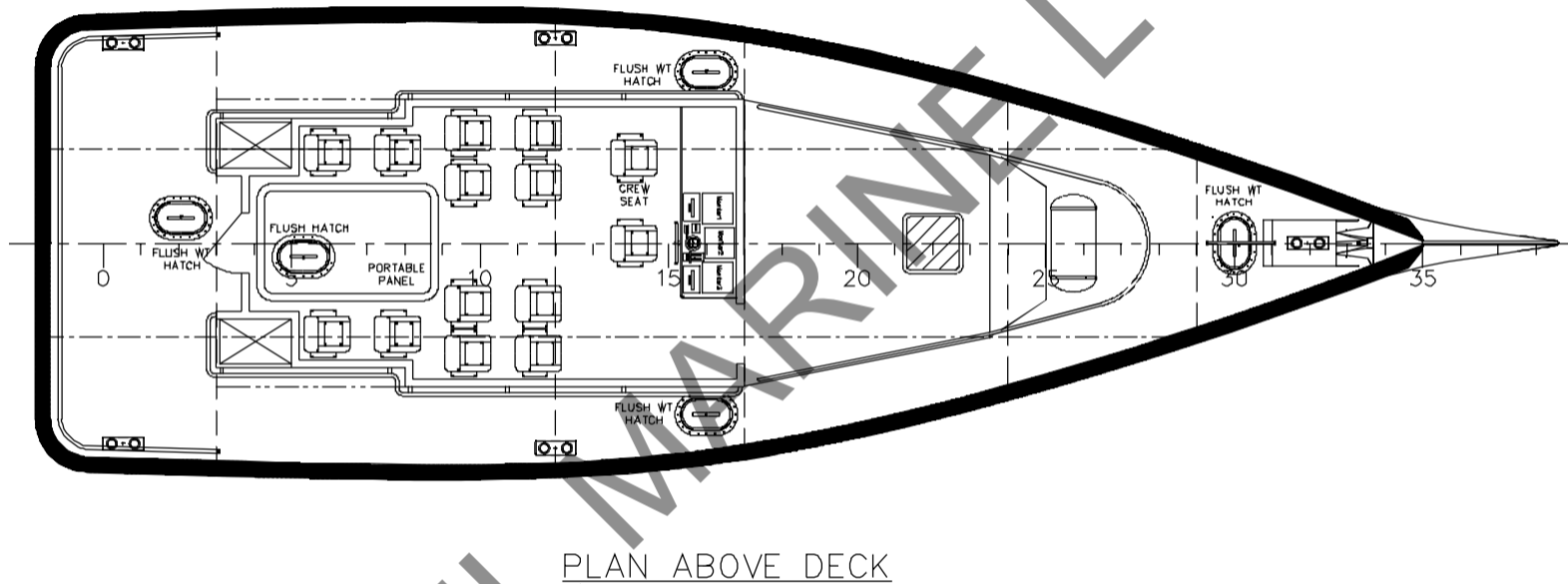
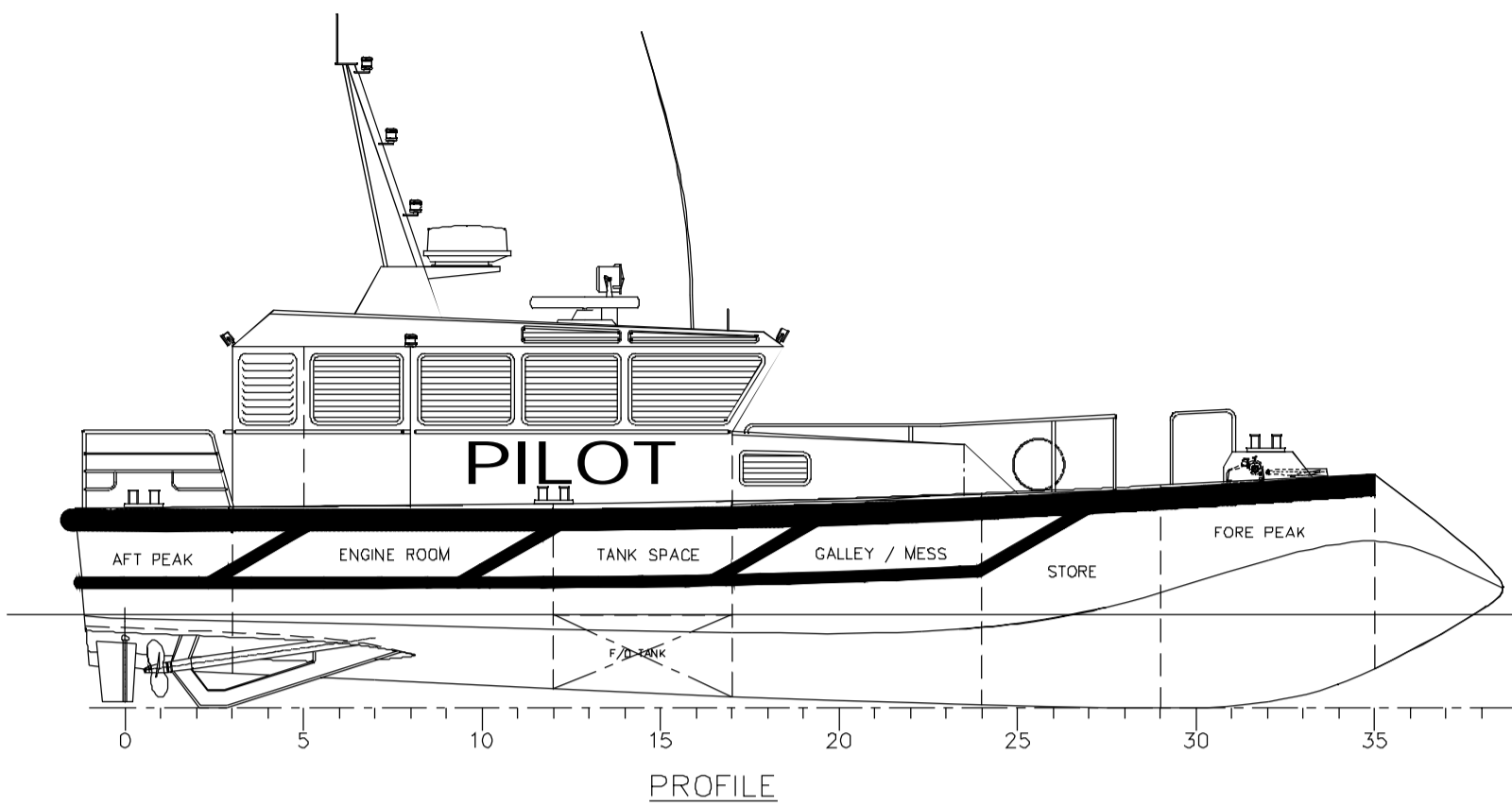



THIS IS A CAD DRG. DO NOT CHANGE BY HAND		DRG. No: 9012-01	TITLE: GENERAL ARRANGEMENT
ISSUE No.	REMARKS	DATE	



PRINCIPAL PARTICULARS:

LOA		20.19	METRES
LWL		19.45	METRES
Bmld		5.86	METRES
Dmld		2.73	METRES
DRAFT		1.30	METRES
COMPLEMENT		2	CREW
		12	PILOTS
TYP. ENGINES		2 x 750	HP
SPEED*		30	KNOTS

*ESTIMATED BASED ON TYP. ENGINES.

 KEEL MARINE Ltd NAVAL ARCHITECTS, MARINE ENGINEERS & SURVEYORS		<small>RODGWAY OFFICE PARK UNITS 6-8, BEDFORD RD PETERFIELD, GL52 3DF UNITED KINGDOM</small> <small>FAC: +44 (0) 1733 289361</small>	
PROJECT : 20m PILOT BOAT WITH WAVE PIERCING BOW		TITLE : GENERAL ARRANGEMENT	
DRN. BY: SM	DATE : 25/11/2013	SCALE : 1:50	SIZE : A1
CHK. BY:	DATE :		
APP. BY:	DATE :		
		DRG. No: 9012-01	
		ISSUE : 1	
THIS DRAWING IS THE PROPERTY OF KEEL MARINE LTD AND MUST NOT BE USED, REPRODUCED OR DISTRIBUTED TO ANY THIRD PARTY WITHOUT THE WRITTEN CONSENT OF KEEL MARINE LTD.			